

How to install Hi-RTK in Win Mobile

Outline::

- 1)download Hi-RTK
- 2)Install ActiveSync software(xp) or Windows Mobile Device Center(win7)
- 3)Connection
- 4)Hi-RTK Installation
- 5)Establish a shortcut

Please follow these details below:

1. Download Hi-RTK software

Hi-RTK software is accessible from Hi-Target CD or Hi-Target website.
Just download it and decompress it.

2. Install Microsoft ActiveSync software or Windows Mobile Device Center.

Microsoft ActiveSync and Windows Mobile Device Center are both active sync software especially for Windows mobile devices. If your OS of PC is Windows XP, then you can download Microsoft ActiveSync software. If yours is Windows 7, you should download Windows Mobile Device Center.

Download:

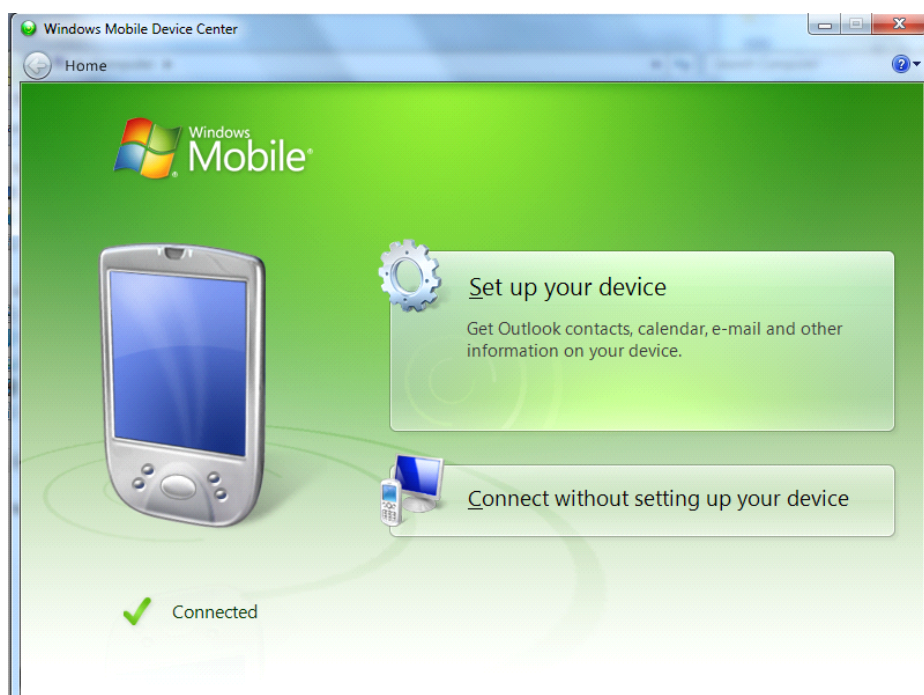
<http://search.microsoft.com/en-us/DownloadResults.aspx?q=mobile+device+center+windows+7&x=-978&y=-143>

Then install the software.

3. Connection

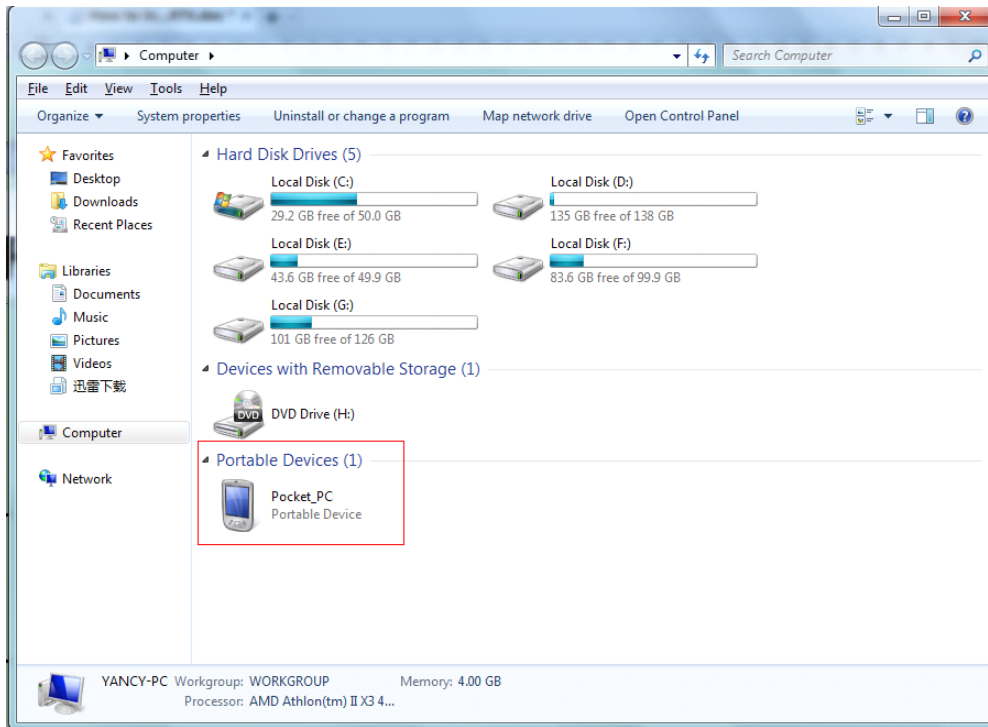
When all the software is prepared, use USB cable to connect the Qmini M to PC.

If all the software and drivers(PC will not ask for an extra driver when connected with Windows Mobile system devices), and image will pop-up.



Click “Connect without setting up your device”, then minimize the window.

Click “Computer” Icon on the desktop or press “Win”+“E” to open windows explorer, you can explorer the documents in the portable devices.



Or click here to explorer the files.



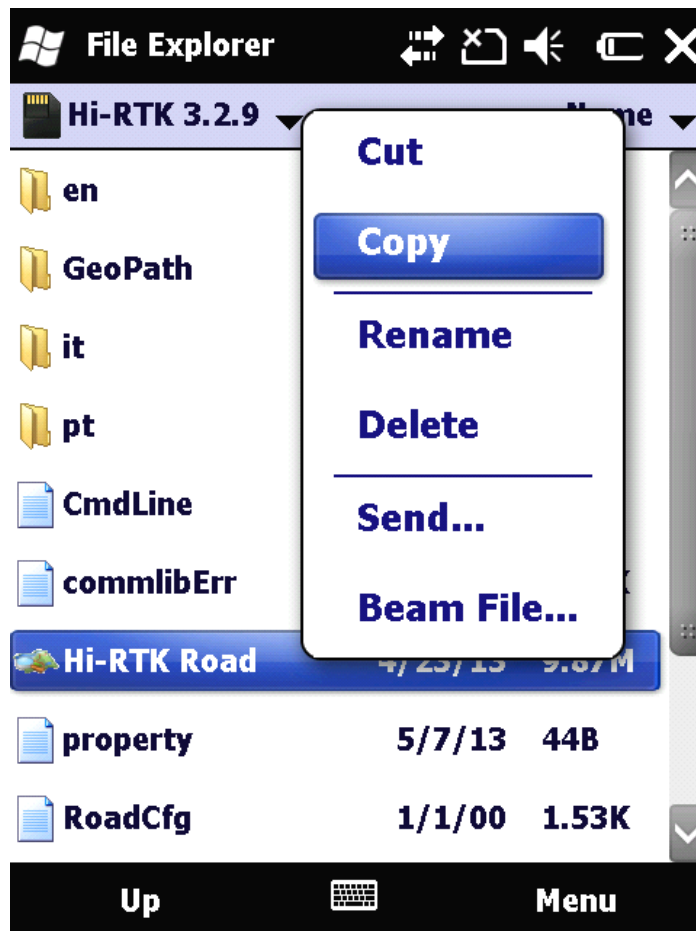
4. Hi-RTK Installation

In fact the Hi-RTK software you have downloaded is a portable software suit which means that you can run the application as soon as you had finished downloading it.

So when you have downloaded the compressed Hi-RTK file, decompress it can copy the Hi-RTK folder to your device(you can copy it to your internal storage or expended storage)

5. Establish a Shortcut

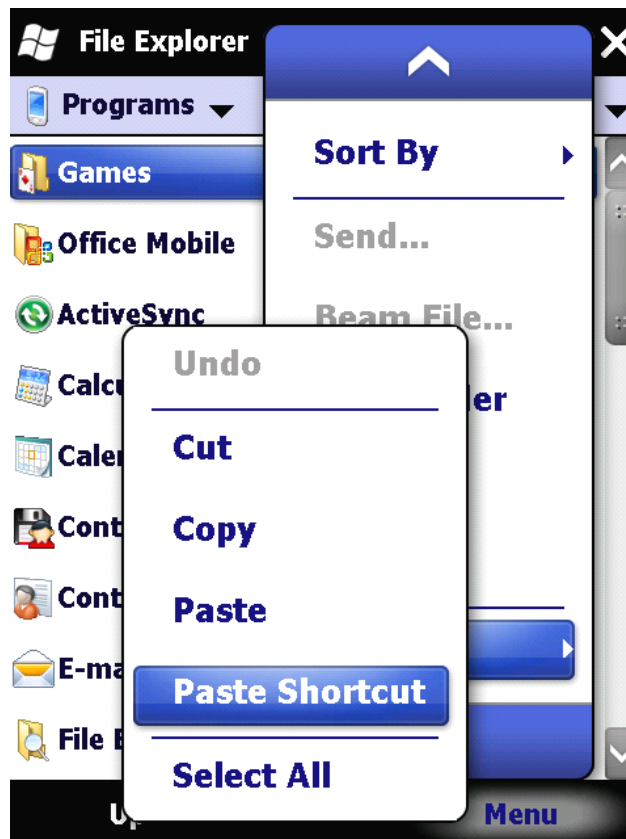
Keep pressing the Hi-RTK Road.exe icon and click **Copy**.



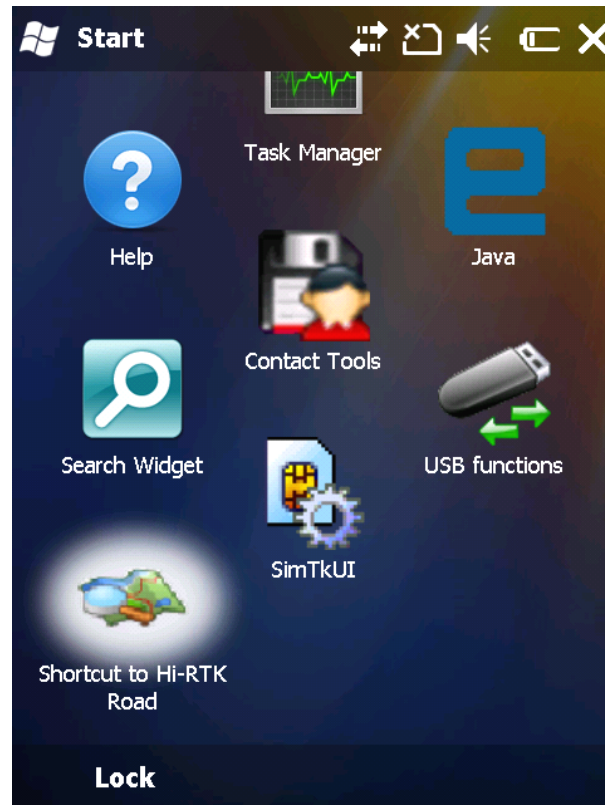
Change the location to: My Device:\Windows\Start Menu\Programs.
Just as the figure shows:



Then click the **Menu** button on the lower right corner: **Menu** ----> **Edit** ----> **Paste Shortcut**



You can see that the shortcut is established:



10th, May, 2013