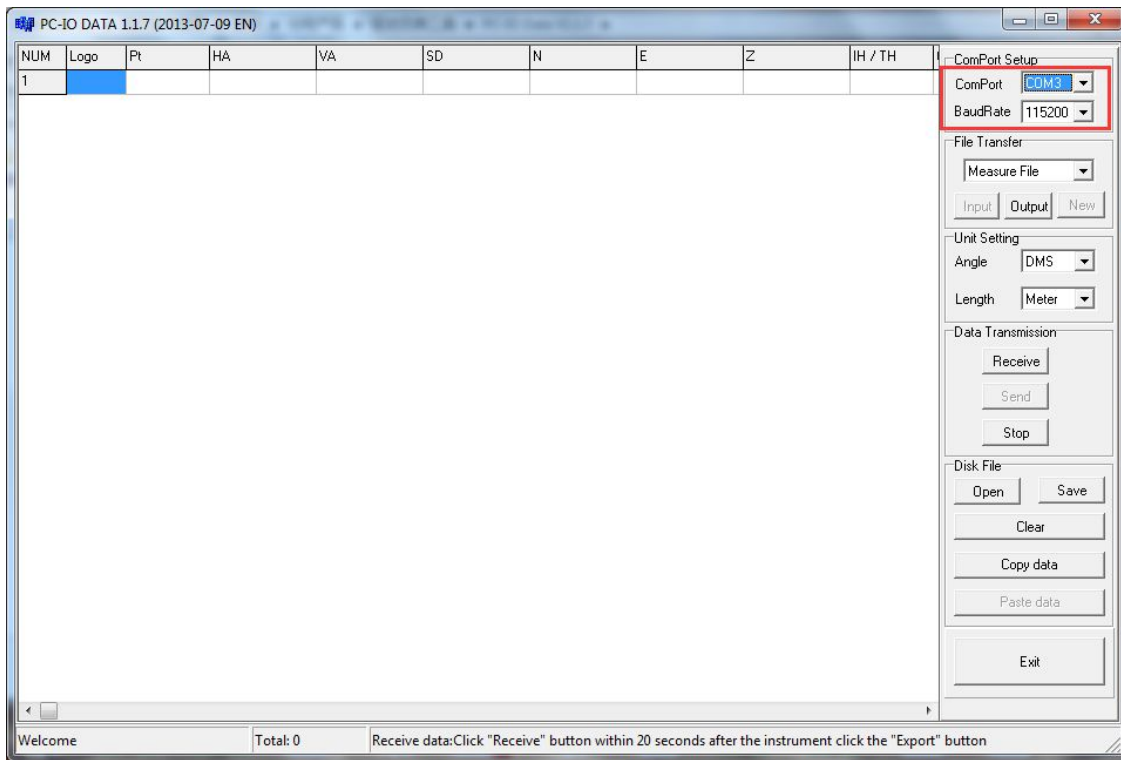
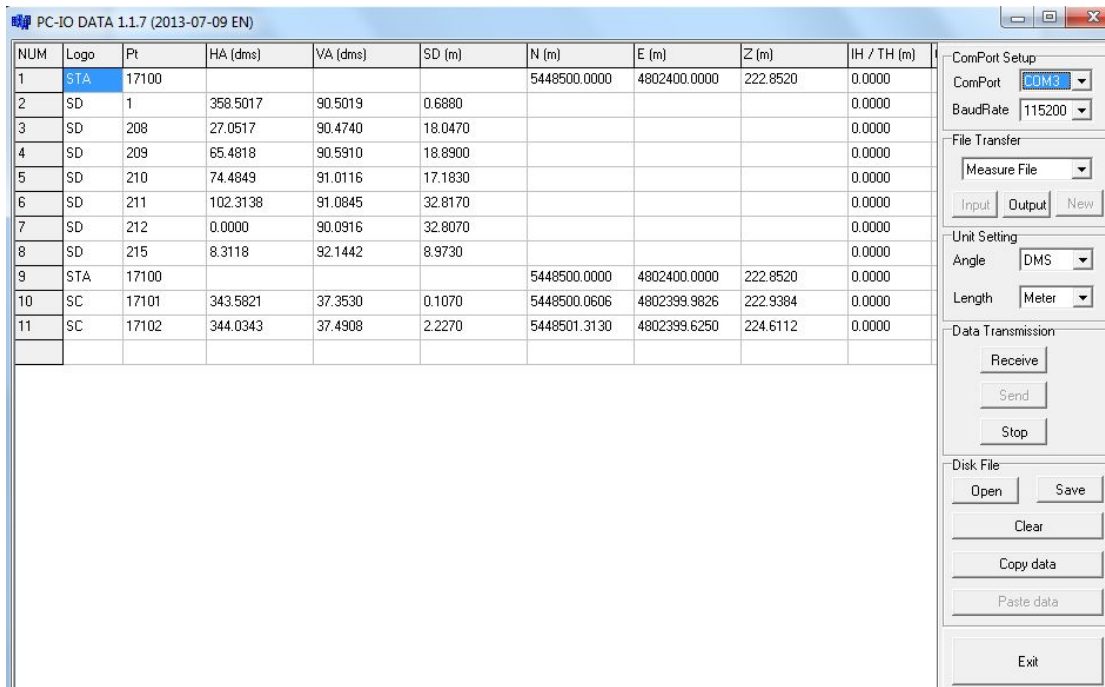


How to edit TS data

1. Open the PC-IO Data software;



2. Then open the .MEA file;



3. Output the .MEA file;

The screenshot shows the 'PC-IO DATA 1.1.7 (2013-07-09 EN)' software interface. The main window contains a table with 11 columns: NUM, Logo, Pt, HA (dms), VA (dms), SD (m), N (m), E (m), Z (m), and IH / TH (m). The data is as follows:

NUM	Logo	Pt	HA (dms)	VA (dms)	SD (m)	N (m)	E (m)	Z (m)	IH / TH (m)
1	STA	17100				5448500.0000	4802400.0000	222.8520	0.0000
2	SD	1	358.5017	90.5019	0.6880				0.0000
3	SD	208	27.0517	90.4740	18.0470				0.0000
4	SD	209	65.4818	90.5910	18.8900				0.0000
5	SD	210	74.4849	91.0116	17.1830				0.0000
6	SD	211	102.3138	91.0845	32.8170				0.0000
7	SD	212	0.0000	90.0916	32.8070				0.0000
8	SD	215	8.3118	92.1442	8.9730				0.0000
9	STA	17100				5448500.0000	4802400.0000	222.8520	0.0000
10	SC	17101	343.5821	37.3530	0.1070	5448500.0606	4802399.9826	222.9384	0.0000
11	SC	17102	344.0343	37.4908	2.2270	5448501.3130	4802399.6250	224.6112	0.0000

On the right side, there are several control panels. The 'File Transfer' panel has a 'Measure File' dropdown menu and three buttons: 'Input', 'Output', and 'New'. The 'Output' button is highlighted with a red box, and a purple arrow points to it. Other panels include 'ComPort Setup' (COM3, 115200), 'Units Setting' (DMS, Meter), 'Data Transmission' (Receive, Send, Stop), and 'Disk File' (Open, Save, Clear, Copy data, Paste data, Exit).

At the bottom, the status bar shows 'Welcome', 'Total: 11', and 'D:\我的资料\Desktop\ZAMIANY.MEA'.

4. Choose the out put coordinate format (Must remember the format you choose)

The screenshot shows the 'PC-IO DATA 1.1.7 (2013-07-09 EN)' software interface. The main window contains a table with 6 columns: NUM, PT#, N, E, Z, and PCODE. The data is as follows:

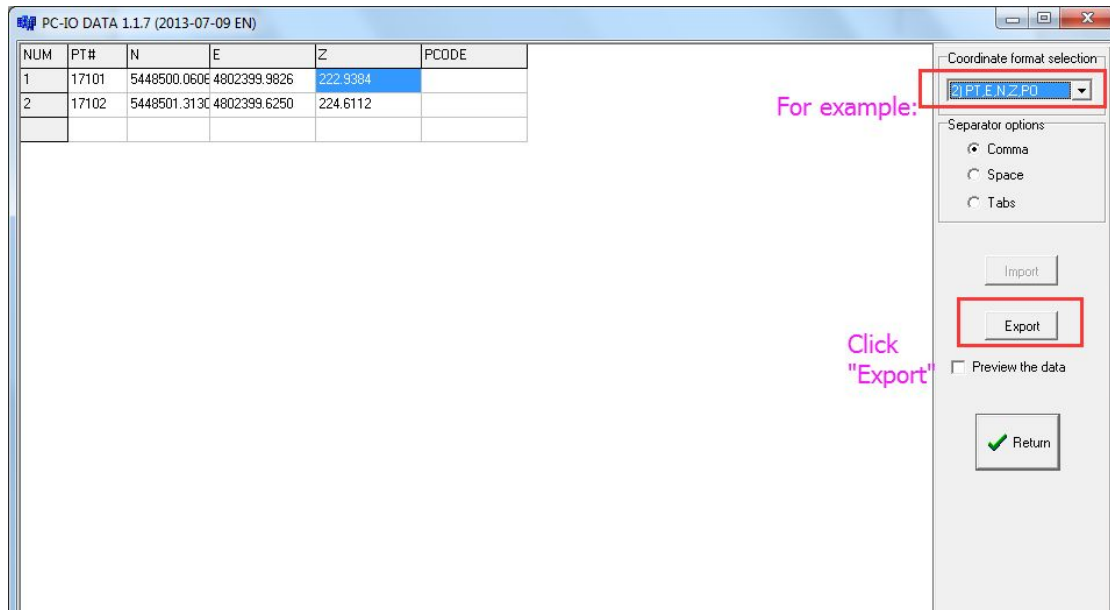
NUM	PT#	N	E	Z	PCODE
1	17101	5448500.0606	4802399.9826	222.9384	
2	17102	5448501.3130	4802399.6250	224.6112	

A 'Coordinate format selection' dialog box is open on the right side. It contains a list of six options:

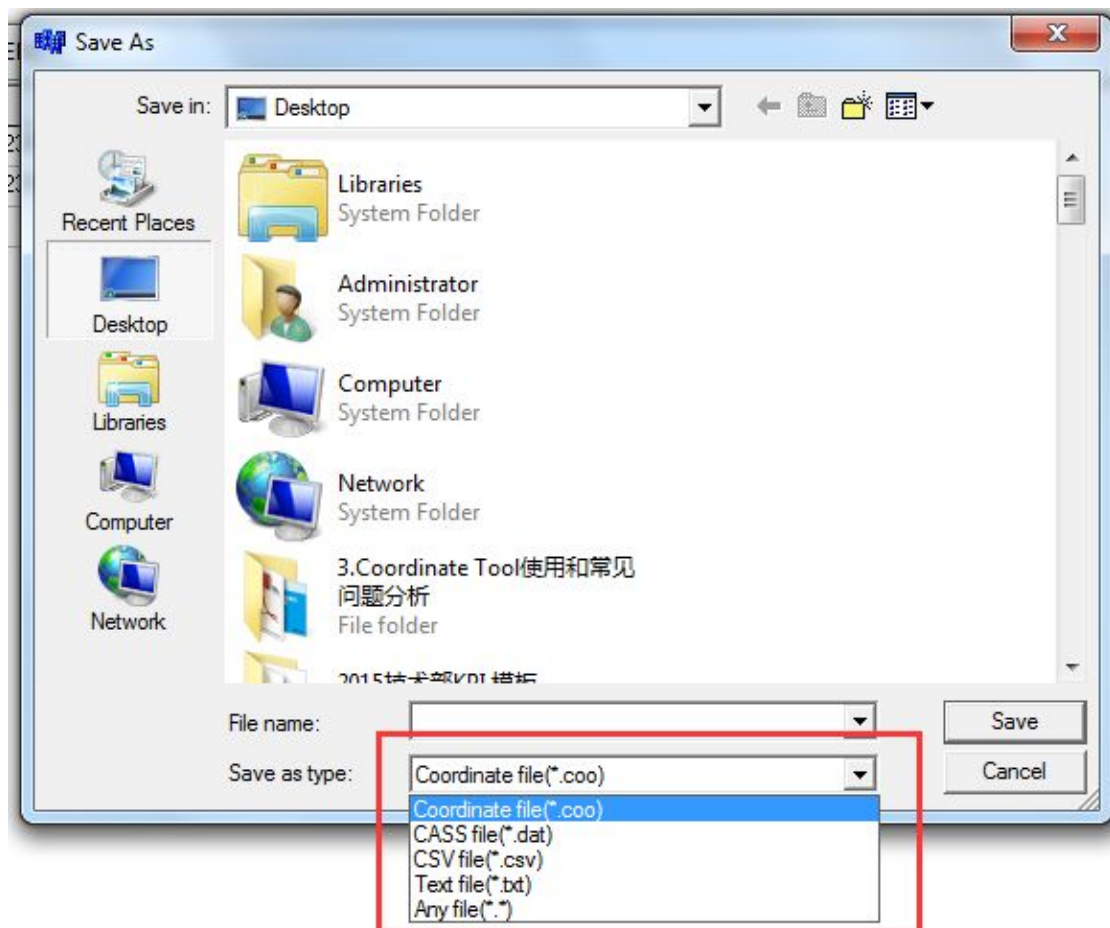
- 1) PT,N,E,Z,PO
- 1) PT,N,E,Z,PO
- 3) PT,PO,N,E,Z
- 4) PT,PO,E,N,Z
- 5) NUM,PT,PO,E,N,Z
- 6) PT,E,N,Z(*.ncn)

The first option, '1) PT,N,E,Z,PO', is selected and highlighted with a blue background. A red box surrounds the entire dialog box, and a purple arrow points to the selected option. Below the list are buttons for 'Import', 'Export', and 'Return' (with a green checkmark icon). There is also a checkbox for 'Preview the data' which is currently unchecked.

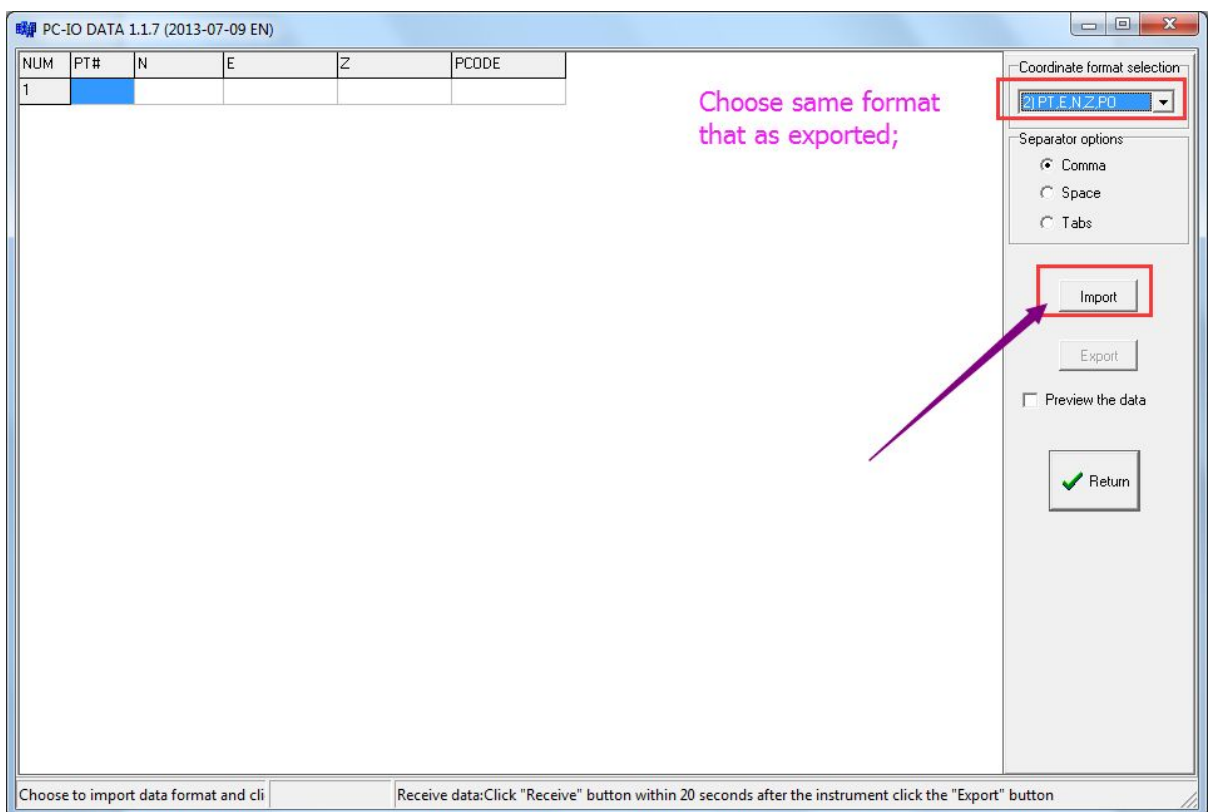
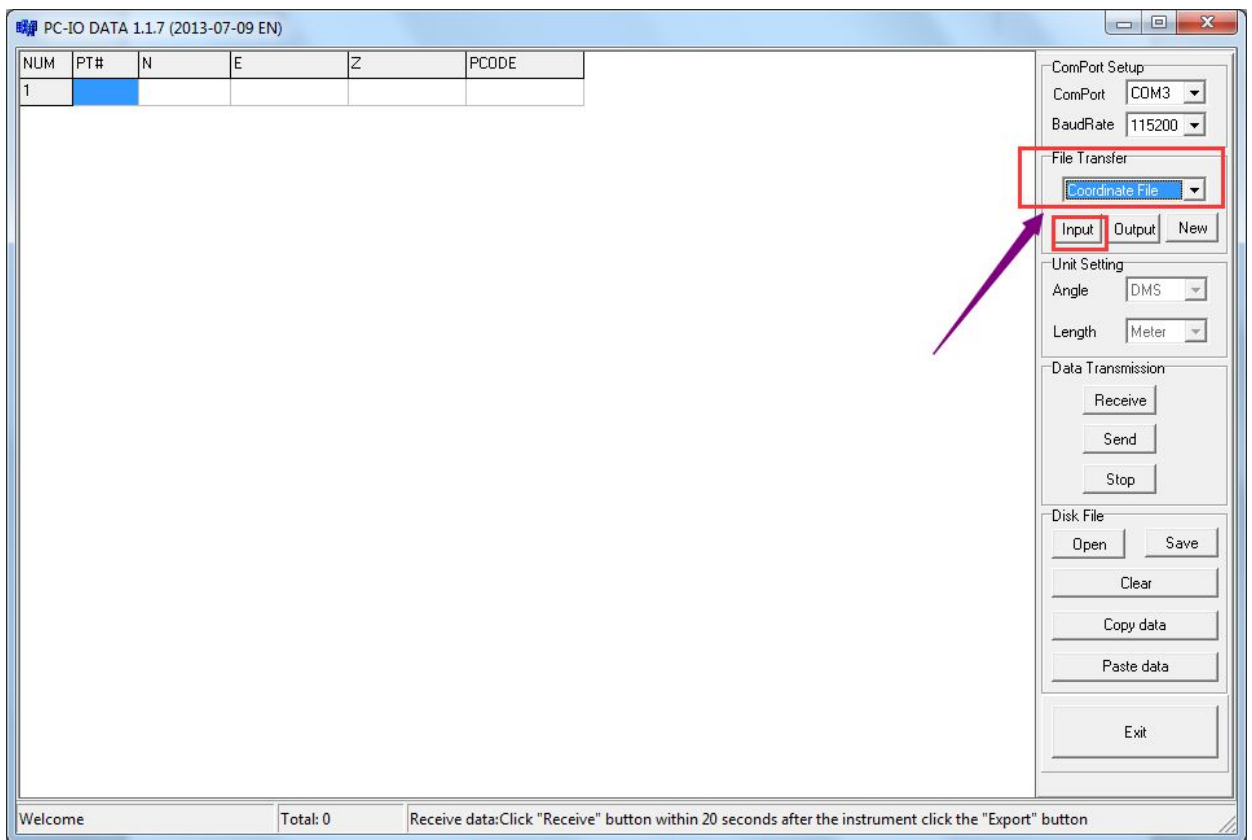
At the bottom, the status bar shows 'Welcome', 'Total: 11', and 'D:\我的资料\Desktop\ZAMIANY.MEA'.



5. Save as the format you want (.CSV or .TXT maybe better)



6. Input the file (.CSV format) that has been saved above;
Choose "Coordinate File"->Input



7. Click “Input” when you can edit the data, but just can edit the coordinates no angle!

PC-IO DATA 1.1.7 (2013-07-09 EN)

NUM	PT#	N	E	Z	PCODE
1	17101	5448500.060E A		888888	
2	17102	5448501.313C	4802399.6250	224.6112	

ComPort Setup
ComPort: COM3
BaudRate: 115200

File Transfer
Coordinate File: [Dropdown]
Input Output New

Unit Setting
Angle: DMS
Length: Meter

Data Transmission
Receive Send Stop

Disk File
Open Save
Clear
Copy data
Paste data
Exit

Choose to import data format and cli | Receive data:Click "Receive" button within 20 seconds after the instrument click the "Export" button