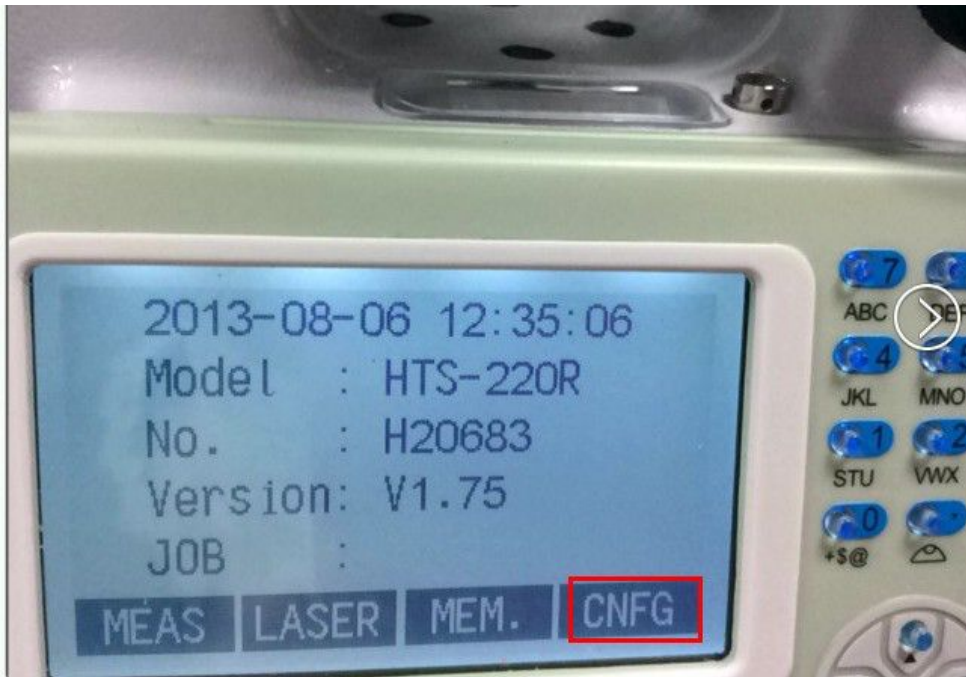


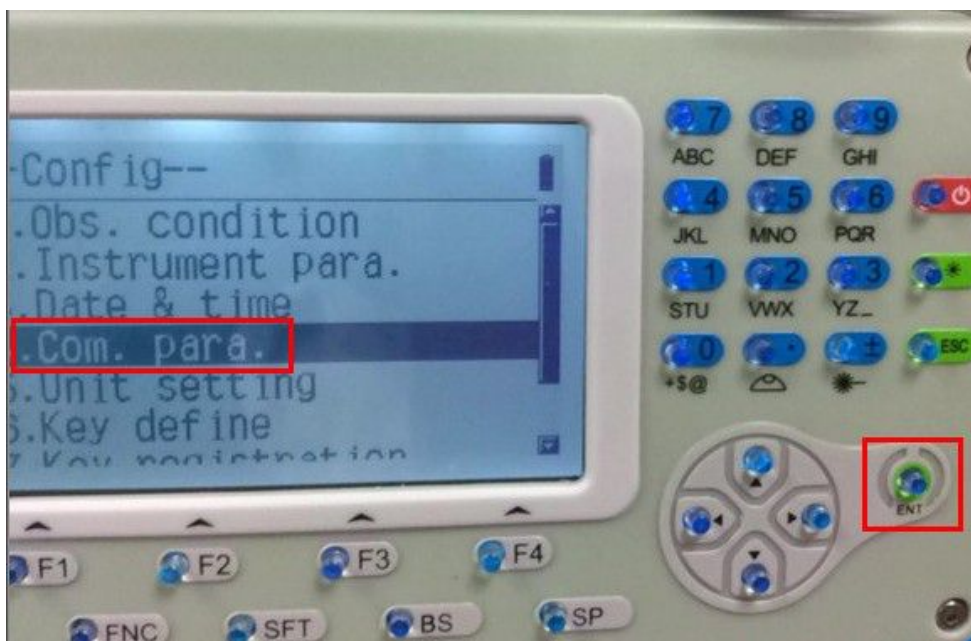
HTS-220R connecting with SurvCE 2.62

1.1 Total Station option:

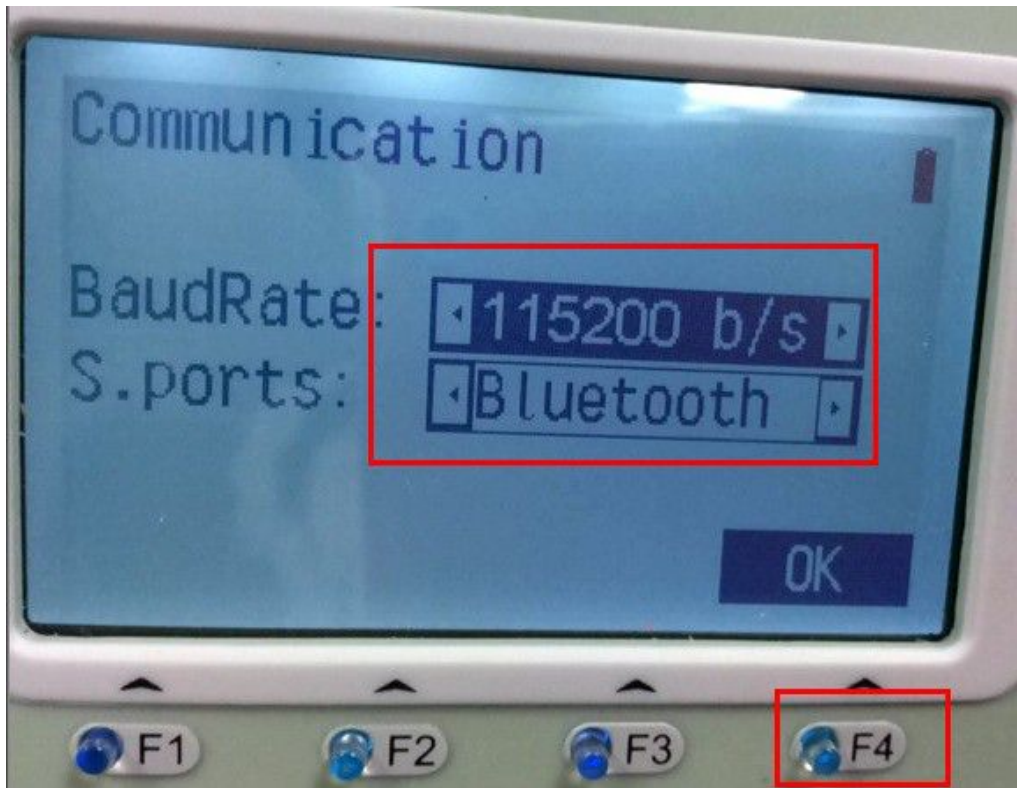
1. Open the total station and find “CNFG”, click F4.



2. Go to “4. Com.para”, then click “ENT”, as showing.

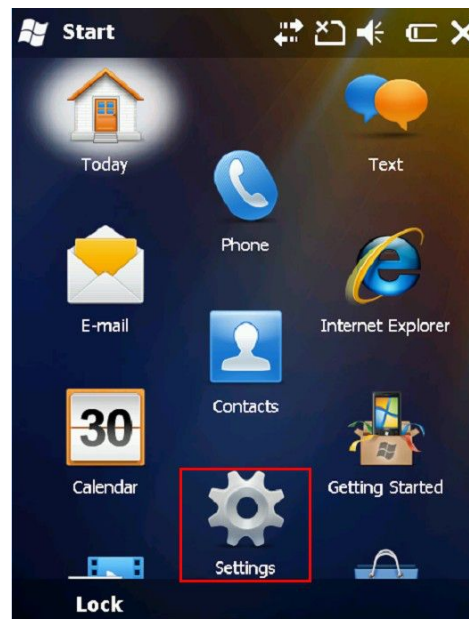
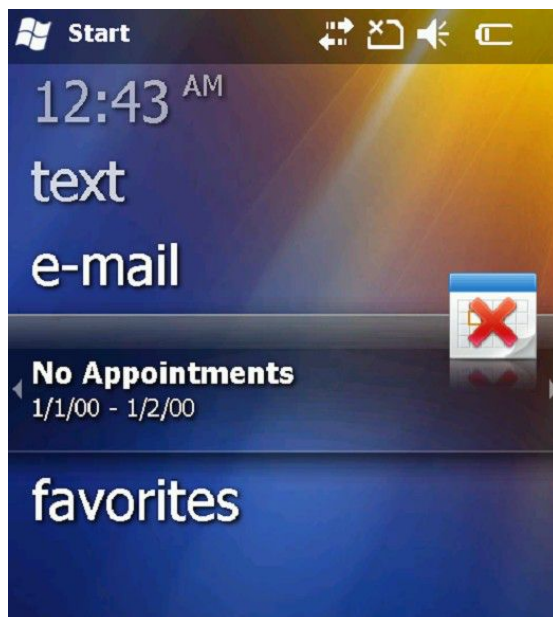


3. Open the bluetooth and define the baud rate as “115200”, press F4 for OK.



1.2 SuevCE Options:

1. Open the device->Settings

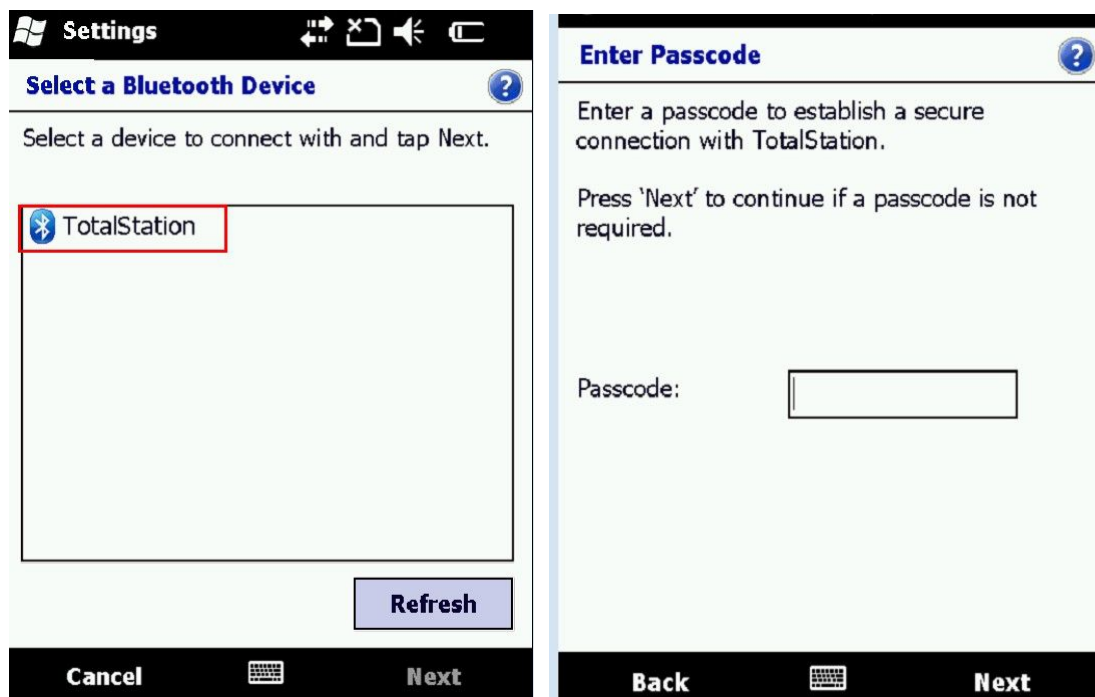


3. Find Bluetooth->Add new device



4. Then you will see the Total station in the bluetooth Device.

Choose and click “Next”-> Input the number “1234” in the Passcode.



5. In the Manufacture choose “Topcon Direct”->Model choose “GTS Series”-> Click “√”

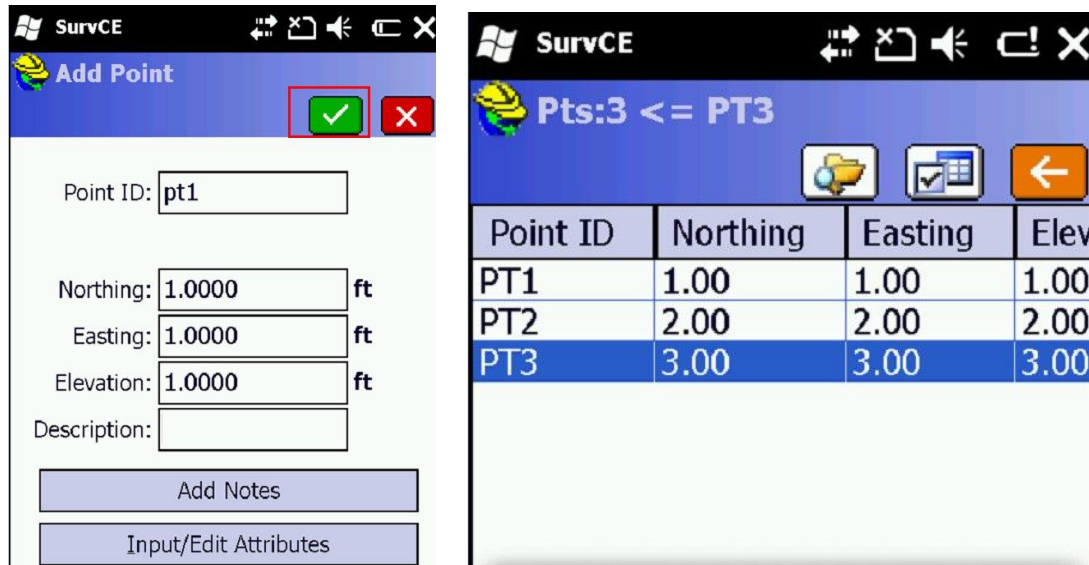


6. Because there is no points, use SurvCE add points by input. As shows.

Choose "Point" -> Add.



7. Input the coordinates->"√", You need to add 3 points at least.

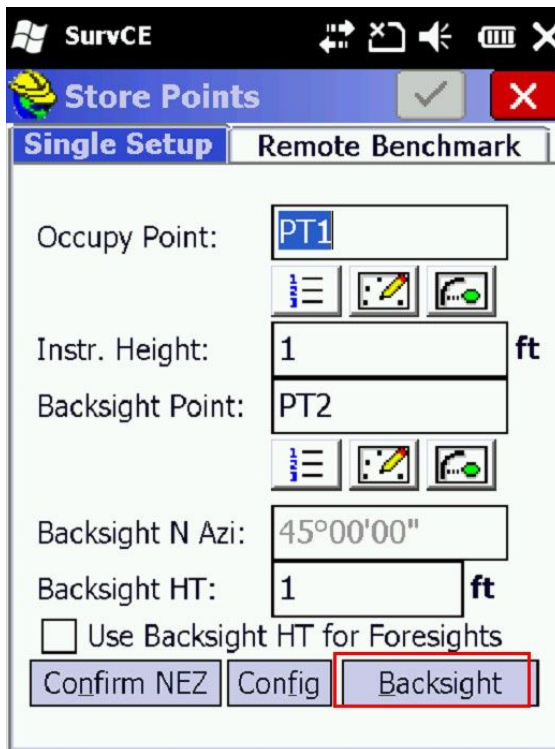


8. Go to “Survey” and find “Store Points” and you will see the 3 points that you just create.

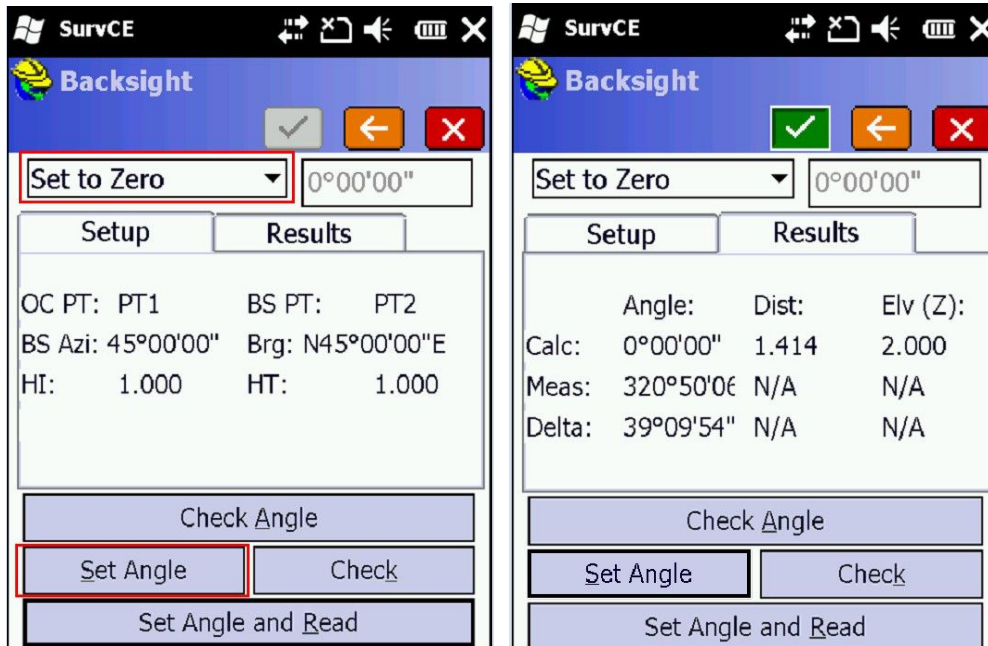


9. Backsight PT2->Click Backsight

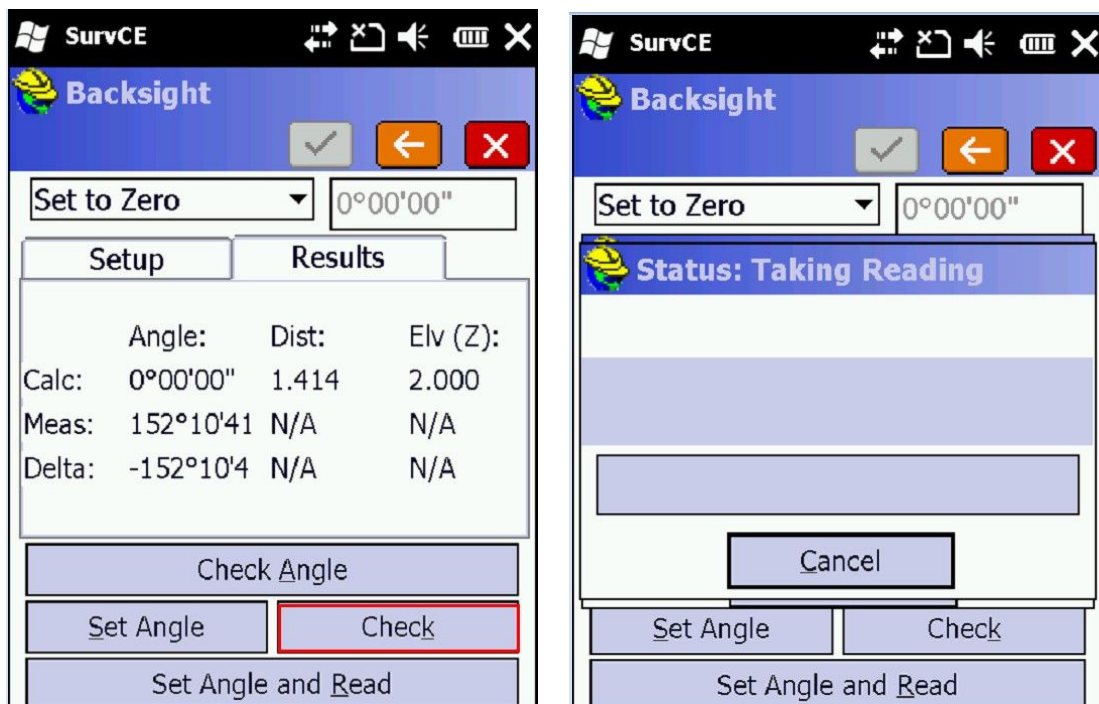
Note: Before go to Backsight, the Total station must turn to measure interface!



10. Set to Zero->click "Set Angle"



11. Click "Check", then click "Check", then it starts taking reading.



12. Click “✓” then the points collected.

