

## Hi-Q Project Post-Processing

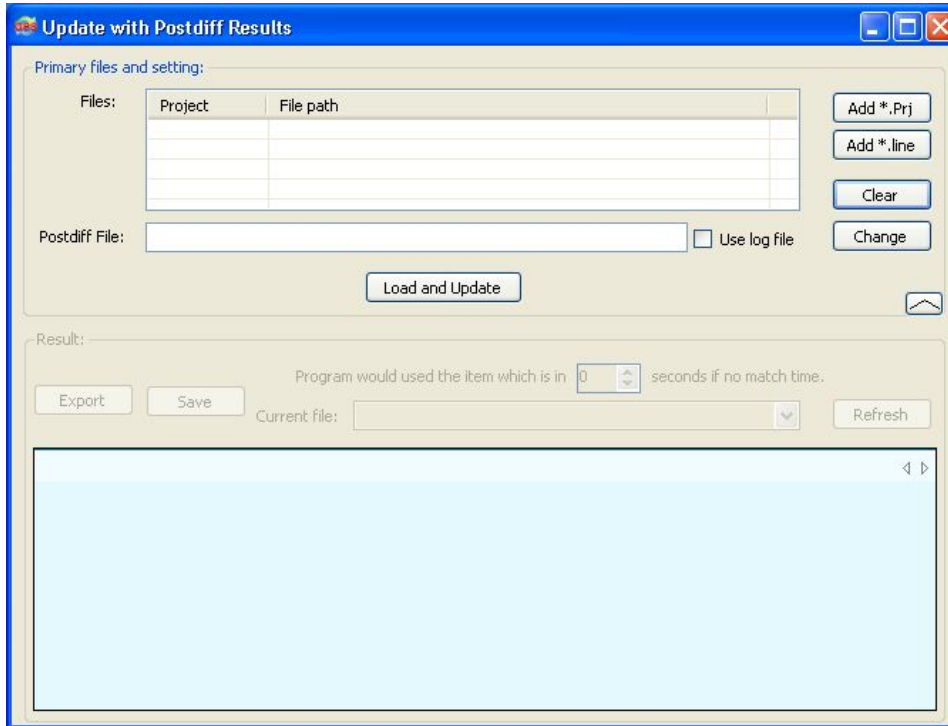
### Preparation:

Raw data from Base station

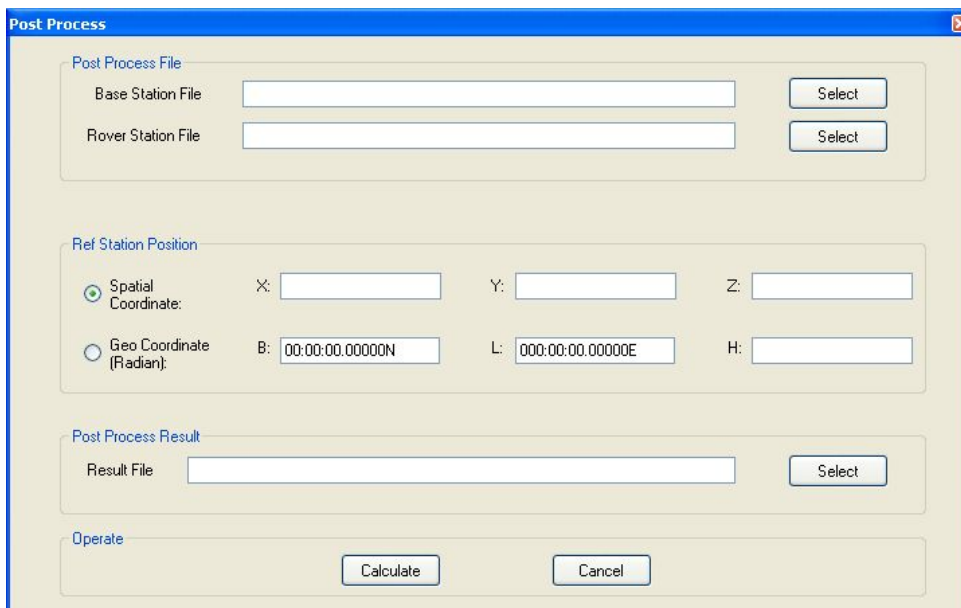
Hi-Q Post-Process project including raw data

### Post-Processing Procedures:

1. Run Hi-Net Server Software, Go to: Tools> Update with post diff result.



2. Mark on " Use log file", then click on "Change" to enter Post-Processing interface.



3. Import Base raw data and Rover raw data. Input the known point coordinates of Base station.

The screenshot shows the 'Post Process' dialog box with the following fields and annotations:

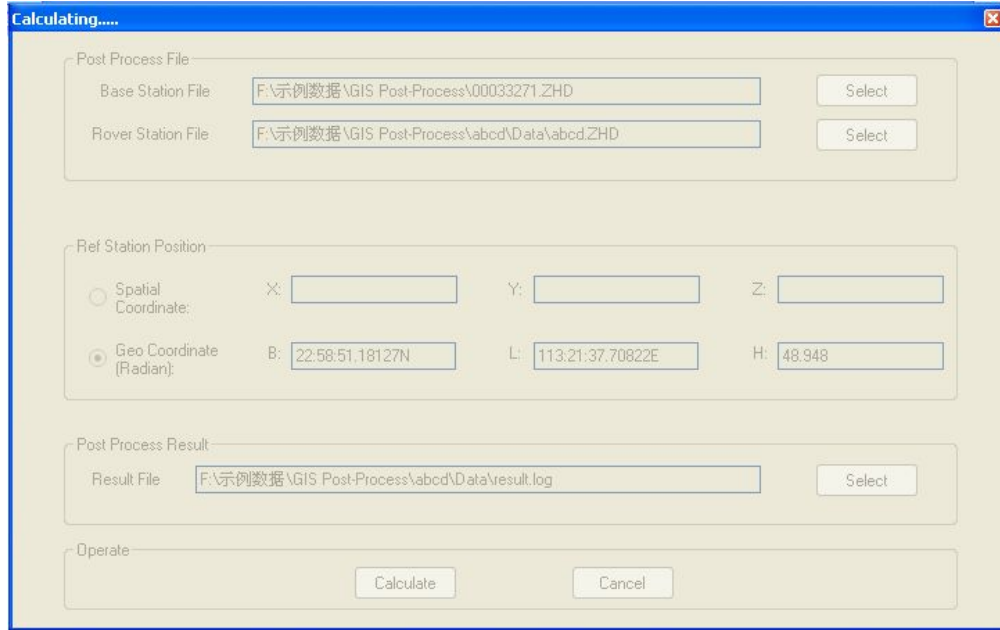
- Post Process File:**
  - Base Station File: F:\示例数据\GIS Post-Process\00033271.ZHD (Annotated with **Base Raw Data**)
  - Rover Station File: F:\示例数据\GIS Post-Process\abcd\Data\abcd.ZHD (Annotated with **Rover Raw Data**)
- Ref Station Position:**
  - Spatial Coordinate: X: [ ], Y: [ ], Z: [ ]
  - Geo Coordinate (Radian): B: 22:58:51.18127N, L: 113:21:37.70822E, H: 48.948 (Annotated with **Base Known Coordinates**)
- Post Process Result:**
  - Result File: [ ] (Annotated with **Post-processed Result**)
- Operate:** Calculate, Cancel

Tips: Base known coordinates should be under WGS 1984.

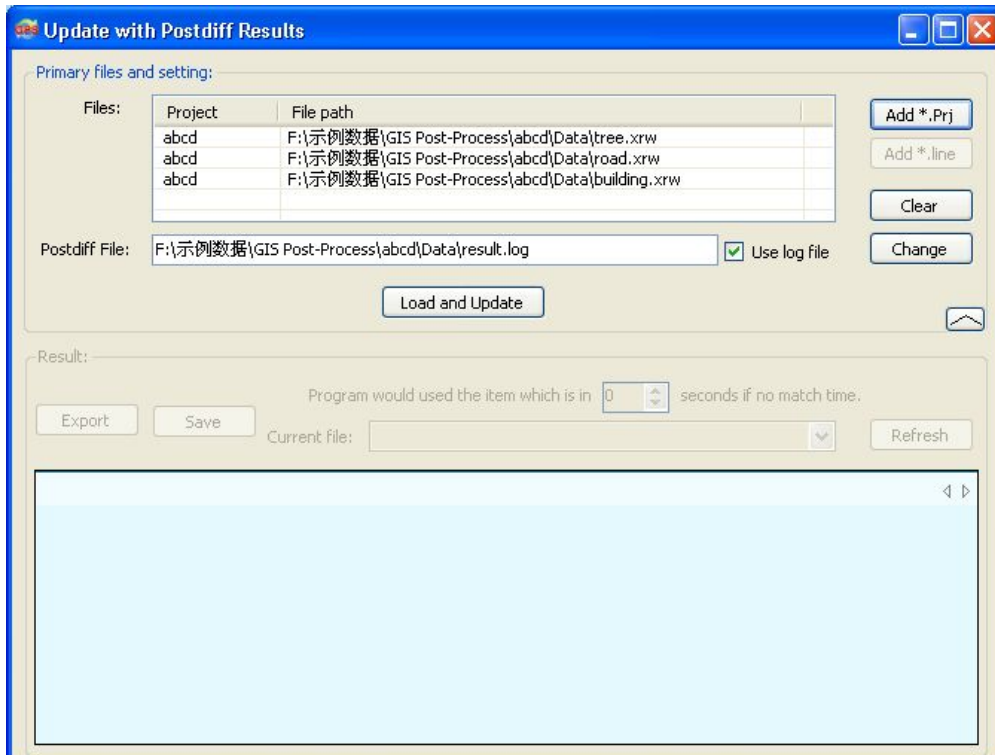
4. Click on **Select**, create a file name for the result file, and then click on **Calculate**, wait for finished. The program would process and generate a post-processed file (\*.log).

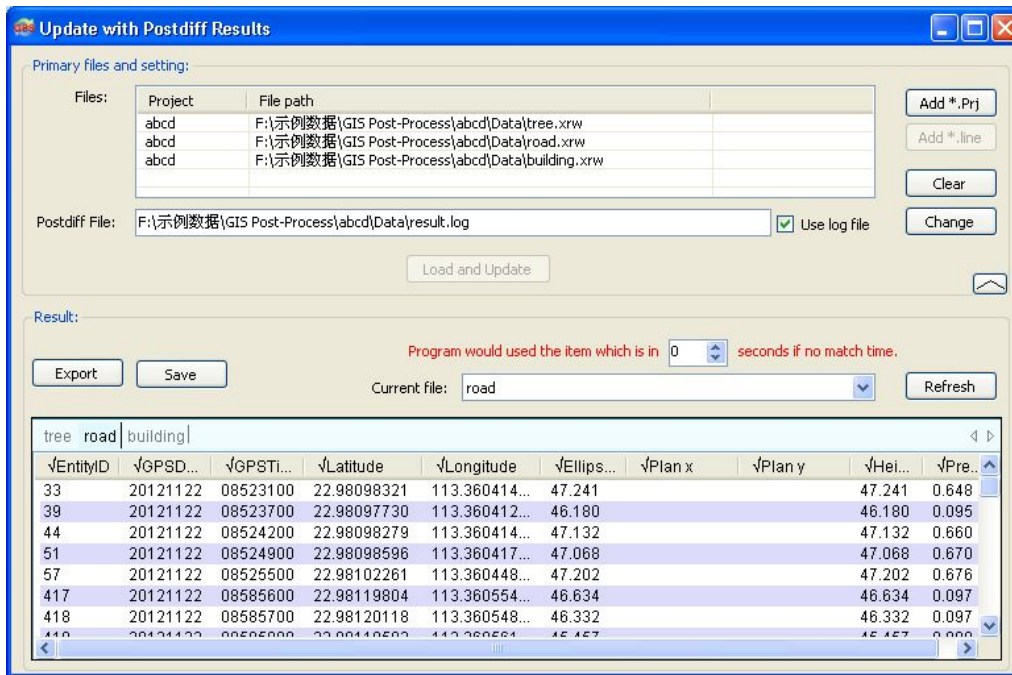
The screenshot shows the 'Post Process' dialog box with the following fields and annotations:


- Post Process File:**
  - Base Station File: F:\示例数据\GIS Post-Process\00033271.ZHD
  - Rover Station File: F:\示例数据\GIS Post-Process\abcd\Data\abcd.ZHD
- Ref Station Position:**
  - Spatial Coordinate: X: [ ], Y: [ ], Z: [ ]
  - Geo Coordinate (Radian): B: 22:58:51.18127N, L: 113:21:37.70822E, H: 48.948
- Post Process Result:**
  - Result File: F:\示例数据\GIS Post-Process\abcd\Data\result.log (Annotated with **Post-processed Result**)
- Operate:** Calculate, Cancel



5. After processing finished, click on **Add \*.Prj** to import Hi-Q project; then click on **Load and Update**, the processed result would apply to the project.





The project had been processed, and all the data can be exported by clicking on  or

