

iFlow RP600/1200 Specifications

Model	iFlow RP600	iFlow RP1200	
Transducer and hardware	System frequency	600kHz	1200kHz
	Internal memory	16G standar	
	Transducer type	Piston	
	Working mode	Broadband, Narrowband, Pulse Coherente	
	Beam	4 Beams Janus, 20°	5 Beams Janus, 20° (600kHz central beam)
	Updating rate	Max 20Hz	
Water Velocity Profiling	Velocity range	± 5m/s (typical), ± 20m/s (maximum)	
	Accuracy	0.25% ±0.2cm/s	
	Resolution	1 mm/s	
	Profiling range(distance)	0.3-90m	0.1-40m
Bottom tracking	Velocity range	± 5m/s typical, ± 20m/s maximum	
	Depth range(minimum)	0.8m	0.15m
	Depth range(maximum)	0.4-120m	0.15-50m
	Depth range	90m	35m
	Accuracy	+0.25% of water velocity relative to ADCP	
	Resolution	1 mm/s	
Cell	Cell depth	0.05-4m	0.02-2m
	Quantity	1~260	
Internal Sensors	Temperature: range/accuracy/resolution	-10°C ~ +60°C / ±0.1°C / 0.001°C	
	Compass: range/accuracy/resolution	0° ~ 360° / ±0.5° / 0.001°	
	Motion sensor: range/accuracy/resolution	±30° / ±0.2° / 0.001°	
	Pressure sensor (optional): range accuracy/resolution	0-200m/0.5%FS/0.01m	
Material	Engineering plastic, aluminum alloy and titanium alloy three material selectable		
Communication	Communication protocol	RS-232 typical, RS-422, WIFI(optional)	
	Baud rate	4800-115200	
Power	Iput	9~18VDC (standard 12V)	
	Power consumption	3.5W (average)	
Environment	Working temperature	-5°C~+45°C	
	Storage temperature	-20°C~+60°C	
Float	Configuration	Three hulls(Trimaran), USV	
	Material	Polyethylene(Trimaran), Carbon Fiber (USV)	
Accessories	ADCP with Transducer, Cables, Charger, Processing software		



AUTHORIZED DISTRIBUTION PARTNER

24N106

Hi-Target Surveying Instrument Co. Ltd

ADD: Building 13, Tian'An Technology Zone HQ Center, No. 555,
North of Panyu RD, Panyu District, 511400 Guangzhou, China.
www.hi-target.com.cn +86-20-28688296 info@hi-target.com.cn



iFlow RP600/1200

Acoustic Doppler Current Profiler

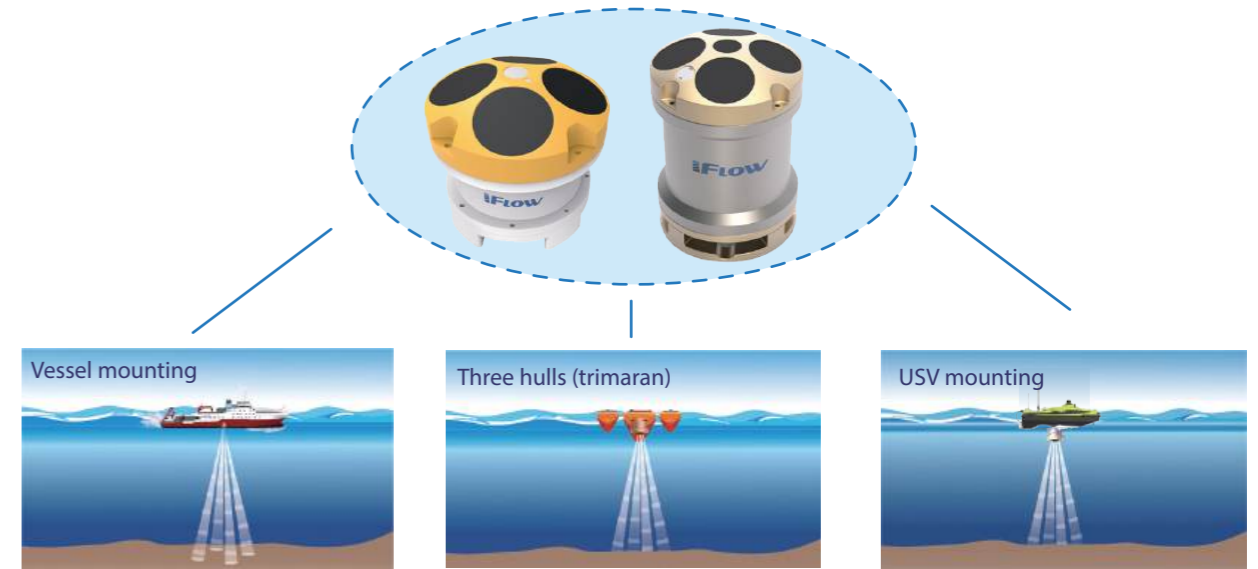


iFlow RP600/1200

The iFlow RP series direct-reading Acoustic Doppler Current Profiler(ADCP) is an accurate and easy to use current profiling system, which can be deployed on flexible platform: trimaran, UVS and so on. Providing accurate measurement with 90m/40m range, the iFlow RP600/1200 can be widely used for monitoring and surveying discharge of rivers, canal, offshore and other engineering projects.



Flexible and versatile mounting



Multiple Built-in Sensors

Integrating the gyro, temperature, and tilting sensor, iFlow RP600/1200 offers multiple source of information for the operation reference.



Long Profiling Range Multiple Cells.

600Hz working frequency extends the current measurement range up to 90 meter (RP1200 up to 25m) with maximum 260 cells.



High Precision Current Measurement

Supported by broadband signal processing technology, the anti-noise level has been improved while the current measurement accuracy can be up to $0.25\% \pm 0.25\text{cm/s}$.



Multiple Working Mode

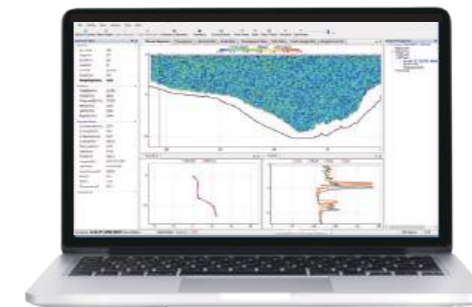
The iFlow RP600 support vessel has mounted, bottom-tracking, monitoring, DVL and self-contained modes. iFlow RP600 can use as ADV, support fixed-point flow velocity measurement and flow velocity direction measurement.



Easy to Use Software

Clear software working flow and UI lower the learning curve, making it easy to use.

Software



Windows



Android

Dimensions

