

HD-MAX II

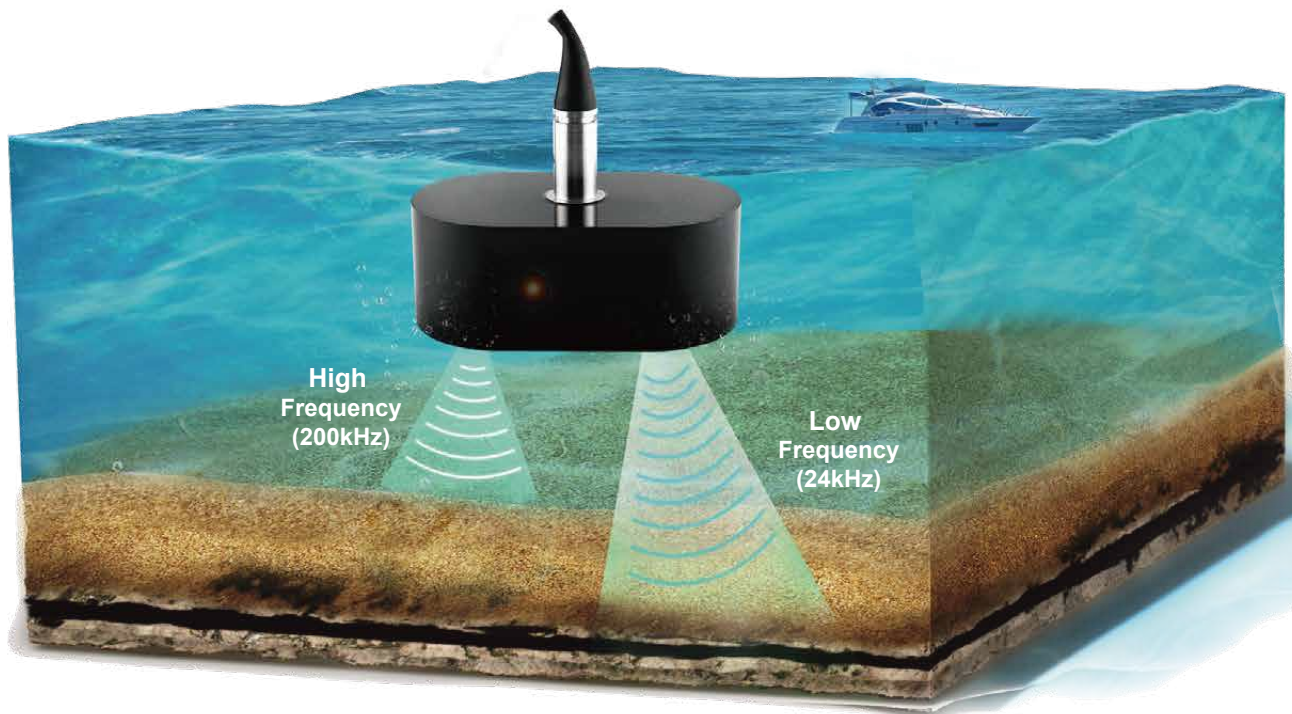
Dual-Frequency Echo Sounder



HD-MAX II

Dual-Frequency Echo Sounder

HD-MAX II dual-frequency echo sounder redefines underwater surveying. Its enhanced host unit is water-resistant, portable, and offers versatile interfaces. The integrated temperature sensor in the transducer enables precise sound velocity calibration, and the fully automated algorithm tackles challenging terrains. Ideal for a wide range of underwater environments, including dredging, siltation, high sediment areas, and deep waters, HD-MAX II is the unrivaled choice for hydrographic professionals.



FEATURES



Unmatched Accuracy & Efficiency

Dual-frequency ensures high-precision measurements. Real-time sound velocity calibration using integrated temperature sensors and a 50Hz ping rate deliver fast, reliable data capture. An adaptive depth algorithm further optimizes performance in diverse terrains.



Seamless User Experience

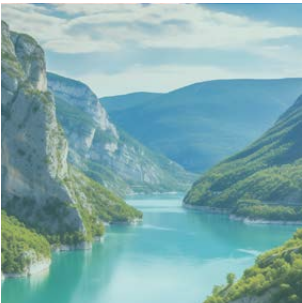
Integrated software streamlines your workflow. A bright 15" display provides a clear view of data, while intuitive buttons offer easy control. Windows 10 with 2.0GHz quad-core processor for efficient data processing.



Built for Tough Conditions

The IP66-rated housing protects against harsh environments. Its lightweight, portable design facilitates easy transport, and the sturdy build ensures long-lasting durability. Versatile connectivity options include PPS, Trigger support, and multi-format data output for effortless data sharing.

APPLICATIONS



Submarine Topography
Surveying



Dredging and Sediment
Removal



High Turbidity
Measurements



Deep-water Depth
Measurement

TECHNICAL SPECIFICATIONS

| | | | |
|-------------------------------|---|--|------------------------------|
| Echo Sounder | Dimension | 441mm*105mm*324mm | |
| | Weight | 8.1kg | |
| | Housing Material | Magnesium alloy | |
| | IP Rating | IP66 | |
| | Ping Rate | 50Hz | |
| | Screen | 15 inches; Resolution: 1280 x 1024@60Hz | |
| | CPU | 2.0GHz, Quad-core | |
| | Input Power | 10-30VDC, 110-240VAC | |
| | Power Consumption | 50W | |
| | Operating Temperature | -5°C to +55°C | |
| | Storage Temperature | -20°C to +60°C | |
| | Interfaces | PPS*1, Trigger*1, RJ45*1, RS232*3, USB*3, HDMI*1, Transducer*1, Power*1 | |
| Raw Data Output Format | Standard NMEA 0183, DESO 25, ODOM, Knudsen, Bathy, Echotrac | | |
| Transducer | Transducer Type | High Channel | Low Channel |
| | Operation Frequency | 200kHz | 24kHz |
| | Depth Range | 0.15 ~ 300m @200kHz | 1~ 2000m @24kHz |
| | Accuracy | ±0.01m ± 0.1% of depth @200kHz | ±0.1m ± 0.1% of depth @24kHz |
| | Resolution | 1cm@200kHz | 10cm@24kHz |
| | Temperature Sensor | -55 ^(H) to +125 ^(H) ; Resolution 0.5 ^(H) | |
| Software | SLHydro Sounder | Project Management, Coordinate Systems, Navigation and Basemap, Multiple External Sensors, Data Acquisition, Planned Deployment, Data Processing, Multi-sensor Calibration, Multi-format Data Export | |



*All parameters listed are theoretical or based on laboratory test.

*Specifications and accessories are subject to change. We reserve the right to the final interpretation.



AUTHORIZED DISTRIBUTION PARTNER

25M121

Hi-Target Surveying Instrument Co., Ltd

ADD: Hi-Target Headquarters, No. 6, Hongchuang 2nd Street, Nancun Town, Panyu District, 511442 Guangzhou, China
 www.hi-target.com.cn +86-20-28688296 sales@hi-target.com.cn